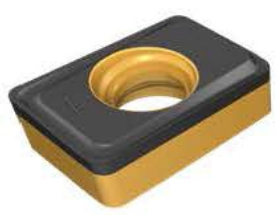


MILLING

12-2024

APRIL 2024

METRIC/IMPERIAL



Double Sided
Insert



Cost Effective
Inserts



High Productivity



QUICKDMILL

**New Multi-Function All-In-One
Cutters with Double Sided Inserts
for Ultimate Machining Versatility**



MILLING

12-2024

APRIL 2024

METRIC/IMPERIAL

NPA

New Product Announcement

NEW PREVIEW

QUICK D MILL

New Multi-Function All-In-One Cutters with Double Sided Inserts for Ultimate Machining Versatility.

Highlights

New Design, Enables Using Each Four Cutting Edged Insert Twice for Guaranteed Exceptional and Efficient Machining.

1. Versatility Across Applications: The All-In-One line offers exceptional versatility, making it suitable for a wide range of milling operations. Whether you need to perform shoulder milling, hole making, or other milling tasks, the All-In-One cutters excel in various applications, eliminating the need for special tools and expand your machining capabilities.
2. Streamlined Operations: The combination of multiple functions in a single tool optimize machining processes and performs 50% of all milling applications. This streamlined approach reduces tool changes, setup time, and overall production costs, while enhancing operational efficiency and productivity.
3. Unmatched Insert Economy: The unique design of All-In-One cutters allows each insert to be used for both center and peripheral edge cutting, which sums to four cutting edges. This innovative approach maximizes insert economy, reduces the frequency of insert replacements and lowers costs.

The new line includes

3 size inserts of 07,09,12 and PNTR chipformer coated with ISCAR's SUMOTECH IC808/830/810 and the newest IC5600 multi-layer MT CVD coating and submicron substrate assures resistance to wear and improves productivity.

Variety of tool range configurations:

- Metric Endmill configurations of 16, 20 and 25mm for families of 07, 09 and 12 size inserts.
- Inch Endmill configuration of 0.625", 0.75" and 1.00" for families of 07, 09 and 12 size inserts.
- A Multi-Master configuration features both metric and inch sizes of 16 (0.63"), 20 (0.79") and 25 mm (0.98") for families of 07, 09 and 12 size inserts with pinpointed High-Pressure coolant.

QUICK D MILL

