

TOOLHOLDING

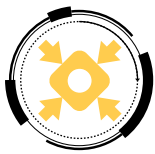
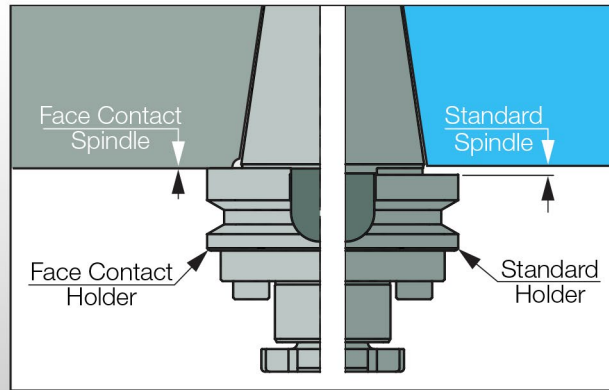
37-2024

JUNE 2024

METRIC

# NPA

New Product Announcement



Rigid Clamping



High Precision Tool



High Productivity



# Face Contact Toolholder

## METRIC



Rigid Clamping

High Precision  
ToolHigh Productivity  
Inserts

# NPA

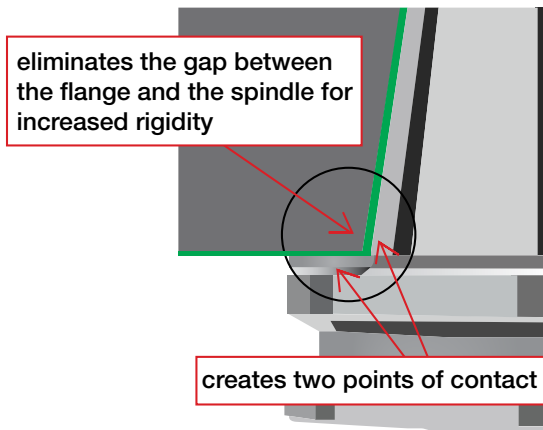
## New Product Announcement

## Highlights

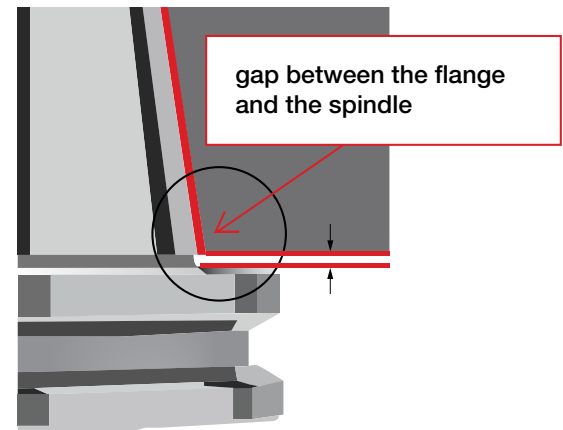
### New Face Contact Line

The new toolholders are suitable for new generation machining centers with high productivity, high performance, and high precision. They also feature a quick tool change of less than one second. The new BT Face Contact tools are intended for the automotive, optical, medical, electrical engineering, and semiconductor industries.

#### Face Contact Holder



#### Standard Holder



### Face Contact = Dual Contact

The holders must be ground to very precise tolerances to enable contact on both the taper and the flange face. **The accuracy of the taper diameter tolerance is 0.0015 mm.**

Prior to spindle clamping, the tool taper and spindle are in contact to ensure a proper taper interface. Once clamped, face contact is made as the elastic deformation of the spindle clamping system provides good clamping forces between the spindle face and the toolholder flange face.

[Click for Short Video](#)

## METRIC



Rigid Clamping



High Precision Tool



High Productivity Inserts

[Click for Short Video](#)

# NPA

## New Product Announcement

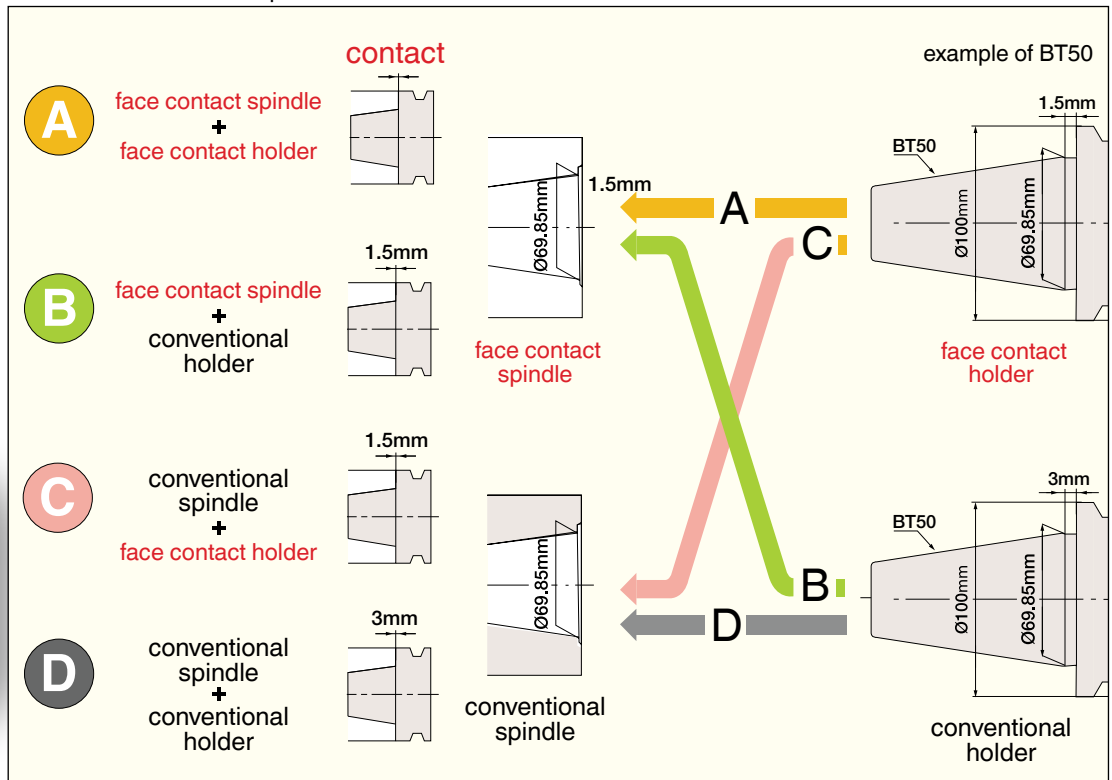
### New Product Group

1. BT-FC-SRKIN-CX
2. BT-C#-FC
3. DIN69871-C#-FC
4. CAT-C#-FC

The new Camfix adapters are perfect for long projection applications, especially anti vibration extensions.

One of the most important features of the face-contact spindle system is its interchangeability with existing toolholders and machining centers. Conventional toolholders can be used for face-contact machines.

Alternatively, face contact toolholders can be utilized in machines equipped with conventional spindles.



### Face Contact Benefits

- Higher tool rigidity due to large diameter flange contact.
- The elimination of axial movement at high rotational speed.
- Improved stability with minimal vibrations.
- Extended tool life.
- Improved surface finish for machined surfaces.
- Higher machining accuracy.
- ATC repeatability improvement.

**METRIC**



Rigid Clamping



High Precision  
Tool



High Productivity  
Inserts

# NPA

New Product Announcement

## **Metric FC Product Line**

BT-FC SRKIN

BT-FC-SRK

BT-MAXIN

BT-FC-ER

BT-FC-EM

BT-FC-SEM

BT-FC-Hydro

BT-FC-MB

# NPA

## New Product Announcement

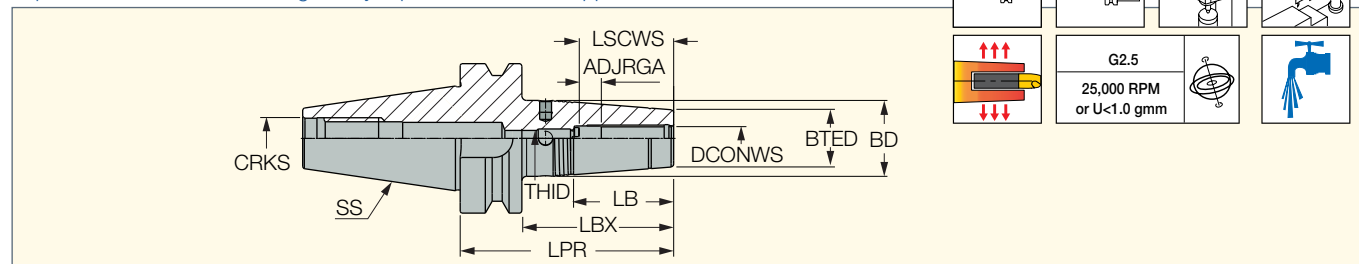
### SHRINKIN BT MAS

#### BT-FC-SRKIN-CX

Thermal Shrink Chucks with BT-FC-SRKIN-CX Form AD Tapered Shank and

Jet Coolant Grooves along the Shank Bore

<https://www.iscar.com/eCatalog/Family.aspx?num=5081&mapp=IT&GFSTYP=M&srch=1>



Designation	SS	DCONWS	BTED	BD	LPR	LBX	LB	ADJRGA	LSCWS	THID	CRKS	DCP <sup>(1)</sup>	kg
<b>BT40 FC SRKIN 6X90 CX</b>	40	6.00	21.00	27.00	90.00	64.0	30.10	9.40	33.9	M5	M16	0	1.26
<b>BT40 FC SRKIN 8X90 CX</b>	40	8.00	21.00	27.00	90.00	64.0	30.10	9.50	34.0	M6	M16	0	1.25
<b>BT40 FC SRKIN 10X90 CX</b>	40	10.00	24.00	32.00	90.00	64.0	42.80	9.30	39.8	M8	M16	0	1.30
<b>BT40 FC SRKIN 12X90 CX</b>	40	12.00	24.00	32.00	90.00	64.0	42.80	9.30	44.8	M10	M16	0	1.30
<b>BT40 FC SRKIN 14X90 CX</b>	40	14.00	27.00	34.00	90.00	64.0	36.50	9.30	44.8	M10	M16	0	1.40
<b>BT40 FC SRKIN 16X90 CX</b>	40	16.00	27.00	34.00	90.00	64.0	36.50	9.30	47.8	M12	M16	0	1.45
<b>BT40 FC SRKIN 20X90 CX</b>	40	20.00	33.00	42.00	90.00	64.0	49.20	8.50	49.0	M16	M16	0	1.50
<b>BT40 FC SRKIN 25X110 CX</b>	40	25.00	44.00	53.00	110.00	84.0	49.20	8.50	55.0	M16	M16	0	2.04

• Use only inductive heating device for SRKIN holders

(1) 1 - Slot for data chip, 0 - Without slot for data chip

#### Spare Parts



Designation	Preset Screw
<b>BT40 FC SRKIN 6X90 CX</b>	PRESET CX M5X13
<b>BT40 FC SRKIN 8X90 CX</b>	PRESET CX M6X12
<b>BT40 FC SRKIN 10X90 CX</b>	PRESET CX M8X16
<b>BT40 FC SRKIN 12X90 CX</b>	PRESET CX M10X16
<b>BT40 FC SRKIN 14X90 CX</b>	PRESET CX M10X16
<b>BT40 FC SRKIN 16X90 CX</b>	PRESET CX M12X16
<b>BT40 FC SRKIN 20X90 CX</b>	PRESET CX M16X14
<b>BT40 FC SRKIN 25X110 CX</b>	PRESET CX M16X14





# NPA

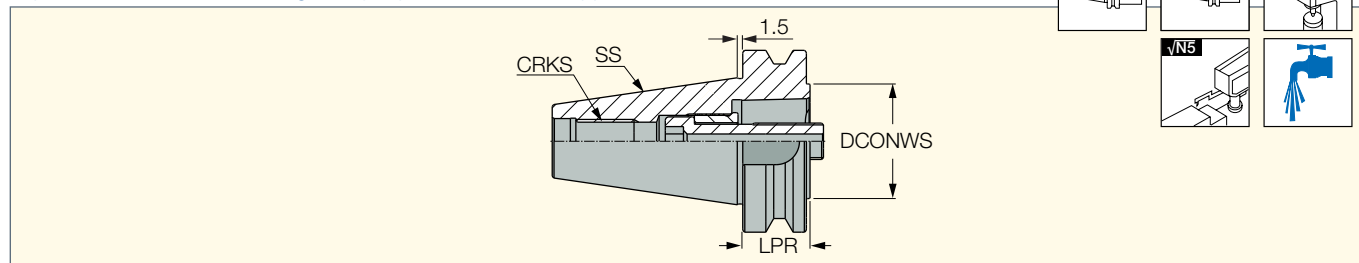
New Product Announcement

## BT MAS CAMFIX

### BT-C#-FC

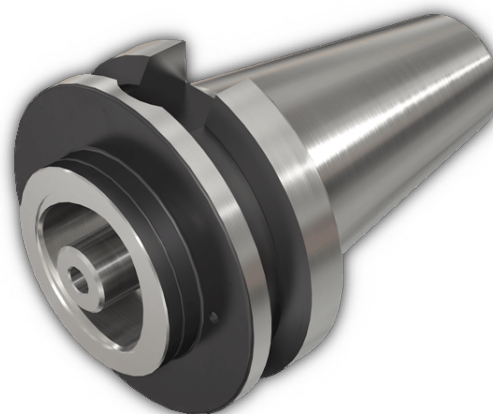
CAMFIX (ISO 26623-1) Holders with BT MAS-403 Face Contact AD Tapered Shanks

<https://www.iscar.com/eCatalog/Family.aspx?fnum=5066&mapp=IT&GFSTYP=M&srch=1>



Designation	SS	DCONWS	LPR	CRKS	DCP <sup>(1)</sup>	
C5 AD BT50FC X40	50	50.00	38.50	M24	0	3.46
C6 AD BT50FC X50	50	63.00	48.50	M24	0	3.55

<sup>(1)</sup> 1 - Slot for data chip, 0 - Without slot for data chip

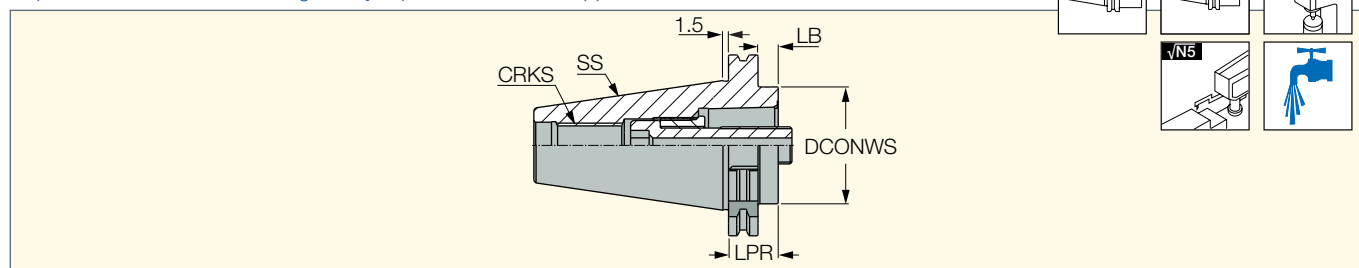


## DIN69871 CAMFIX

### DIN69871-C#-FC

CAMFIX (ISO 26623-1) Holders with DIN 69871 Face Contact AD Tapered Shanks

<https://www.iscar.com/eCatalog/Family.aspx?fnum=5067&mapp=IT&GFSTYP=M&srch=1>



Designation	SS	DCONWS	LPR	LB	CRKS	DCP <sup>(1)</sup>	
C5 AD SK50FC X30	50	50.00	28.50	11.00	M24x3	0	3.30
C6 AD SK50FC X50	50	63.00	48.50	31.00	M24x3	0	3.45

<sup>(1)</sup> 1 - Slot for data chip, 0 - Without slot for data chip

# NPA

## New Product Announcement

TOOLHOLDING

37-2024

JUNE 2024

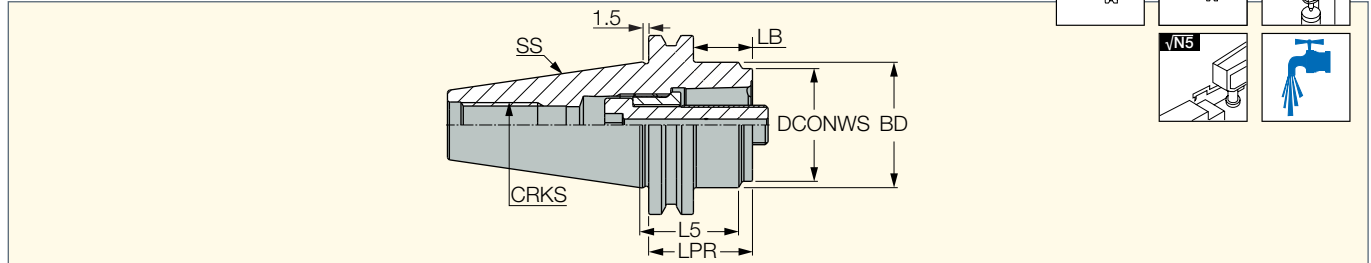
METRIC

### CAT CAMFIX

#### CAT-C#-FC

CAMFIX (ISO 26623-1) Holders with Caterpillar Face Contact AD Tapered Shanks

<https://www.iscar.com/eCatalog/Family.aspx?fnum=5068&mapp=IT&GFSTYP=M&srch=1>



Designation	SS	DCONWS	BD	LPR	LB	L5	CRKS	DCP <sup>(1)</sup>	
<b>C5 AD CAT50FC X40</b>	50	50.00	69.90	38.50	21.00	33.50	1-8	0	3.20
<b>C6 AD CAT50FC X50</b>	50	63.00	70.00	48.50	31.00	36.00	1-8	0	3.30

<sup>(1)</sup> 1 - Slot for data chip, 0 - Without slot for data chip



# NPA

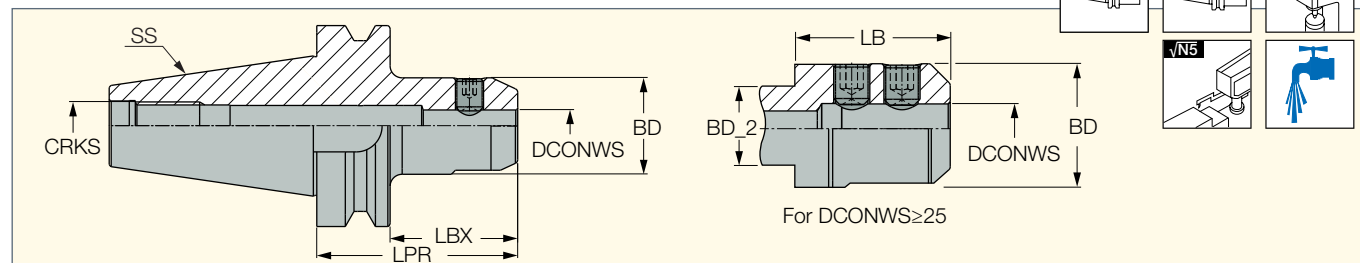
New Product Announcement

## BT MAS

### BT-FC-EM

DIN1835 Form B Endmills with BT MAS-403 Face Contact AD Tapered Shanks

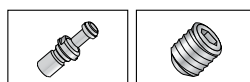
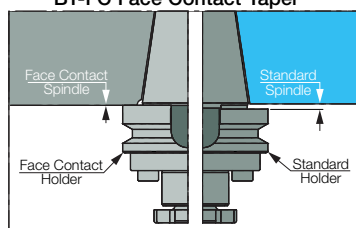
<https://www.iscar.com/eCatalog/Family.aspx?fnum=1717&mapp=IT&GFSTYP=M&srch=1>



Designation	SS	DCONWS	BD	BD_2	LPR	LBX	LB	CRKS	DCP <sup>(1)</sup>	kg
BT30 FC EM12X60	30	12.00	42.00	-	60.00	38.0	-	M12	0	0.73
BT30 FC EM16X60	30	16.00	45.90	-	60.00	38.0	-	M12	0	0.80
BT30 FC EM20X80	30	20.00	52.00	44.40	80.00	58.0	48.00	M12	0	1.04
BT40 FC EM10X65	40	10.00	35.00	-	65.00	39.0	-	M16	0	1.25
BT40 FC EM12X65	40	12.00	42.00	-	65.00	39.0	-	M16	0	1.29
BT40 FC EM16X65	40	16.00	48.00	-	65.00	39.0	-	M16	0	1.37
BT40 FC EM20X75	40	20.00	52.00	-	75.00	49.0	-	M16	0	1.56
BT40 FC EM25X105	40	25.00	65.00	61.00	105.00	79.0	68.00	M16	0	2.54
BT40 FC EM32X110	40	32.00	71.00	61.00	110.00	83.0	73.00	M16	0	1.87
BT50 FC EM12X100	50	12.00	42.00	-	100.00	62.0	-	M24	0	4.25
BT50 FC EM16X100	50	16.00	48.00	-	100.00	63.5	-	M24	0	4.22
BT50 FC EM20X100	50	20.00	52.00	-	100.00	63.5	-	M24	0	4.33
BT50 FC EM25X115	50	25.00	65.00	-	115.00	78.5	-	M24	0	5.36
BT50 FC EM32X115	50	32.00	71.00	-	115.00	78.5	-	M24	0	5.38
BT50 FC EM40X115	50	40.00	90.00	-	115.00	78.5	-	M24	0	6.29
BT50 FC EM50X125	50	50.00	100.00	-	125.00	87.0	-	M24	0	7.32

<sup>(1)</sup> 1 - Slot for data chip, 0 - Without slot for data chip

#### BT-FC Face Contact Taper





# NPA

## New Product Announcement

TOOLHOLDING

37-2024

JUNE 2024

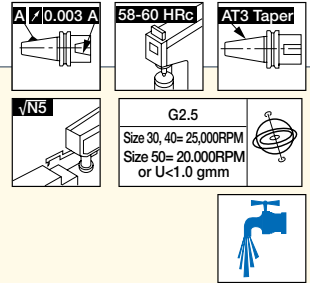
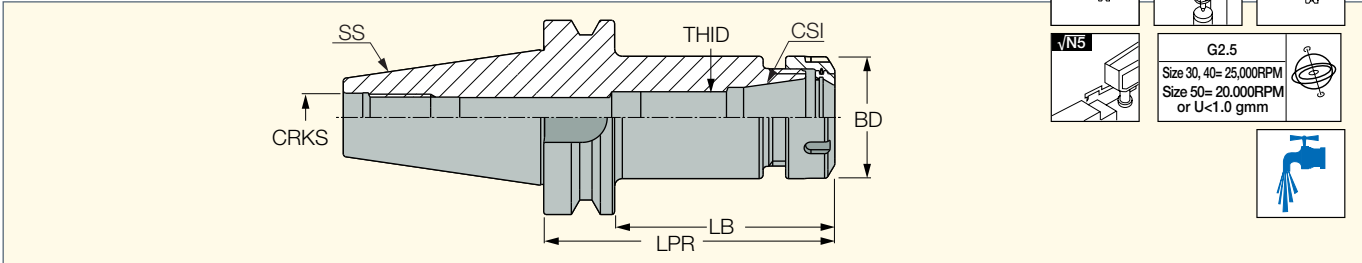
METRIC

### BT MAS

### BT-FC-ER

ER Collet Chucks with BT MAS-403 Face Contact AD Tapered Shanks

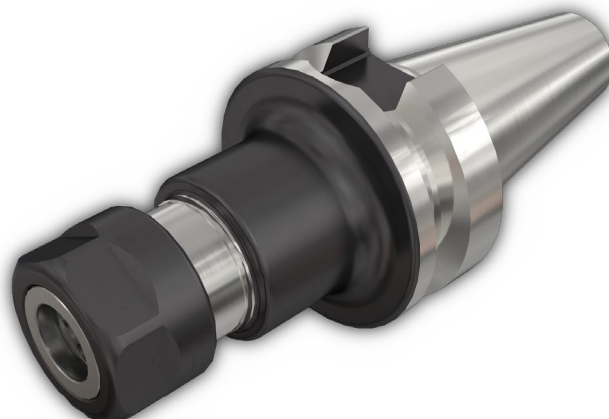
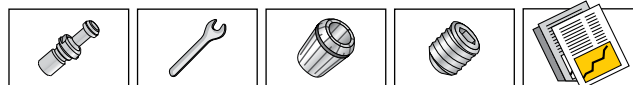
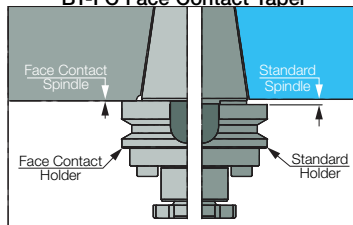
<https://www.iscar.com/eCatalog/Family.aspx?fnum=2492&mapp=IT&GFSTYP=M&srch=1>



Designation	SS	CSI	BD	LPR	LB	THID	CRKS	DCP <sup>(1)</sup>	kg	
BT30 FC ER16X70	30	ER16	28.00	70.00	48.0	M10	M12	0	0.60	NUT ER16 TOP
BT30 FC ER16X100	30	ER16	28.00	100.00	79.0	M10	M12	0	0.61	NUT ER16 TOP
BT30 FC ER20X70	30	ER20	34.00	70.00	48.0	M12	M12	0	0.51	NUT ER20 TOP
BT30 FC ER25X60	30	ER25	42.00	60.00	38.0	M16	M12	0	0.47	NUT ER25 TOP
BT30 FC ER32X60	30	ER32	50.00	60.00	38.0	M18	M12	0	0.46	NUT ER32 TOP
BT40 FC ER16X70	40	ER16	28.00	70.00	44.0	M12	M16	0	1.05	NUT ER16 TOP
BT40 FC ER16X100	40	ER16	28.00	100.00	74.0	M12	M16	0	1.17	NUT ER16 TOP
BT40 FC ER32X60	40	ER32	50.00	60.00	34.0	M22X1.5	M16	0	0.92	NUT ER32 TOP
BT40 FC ER32X100	40	ER32	50.00	100.00	74.0	M22X1.5	M16	0	1.54	NUT ER32 TOP
BT40 FC ER40X80	40	ER40	63.00	80.00	54.0	M28X1.5	M16	0	1.09	NUT ER40 TOP
BT50 FC ER16X100	50	ER16	28.00	100.00	63.5	M12	M24	0	3.91	NUT ER16 TOP
BT50 FC ER16X150	50	ER16	28.00	150.00	113.5	M12	M24	0	3.96	NUT ER16 TOP
BT50 FC ER32X100	50	ER32	50.00	100.00	63.5	M22X1.5	M24	0	3.98	NUT ER32 TOP
BT50 FC ER32X150	50	ER32	50.00	150.00	113.5	M22X1.5	M24	0	4.65	NUT ER32 TOP
BT50 FC ER40X100	50	ER40	63.00	100.00	63.5	M28X1.5	M24	0	4.03	NUT ER40 TOP
BT50 FC ER40X150	50	ER40	63.00	150.00	113.5	M28X1.5	M24	0	5.60	NUT ER40 TOP

<sup>(1)</sup> 1 - Slot for data chip, 0 - Without slot for data chip

#### BT-FC Face Contact Taper



# NPA

## New Product Announcement

TOOLHOLDING

37-2024

JUNE 2024

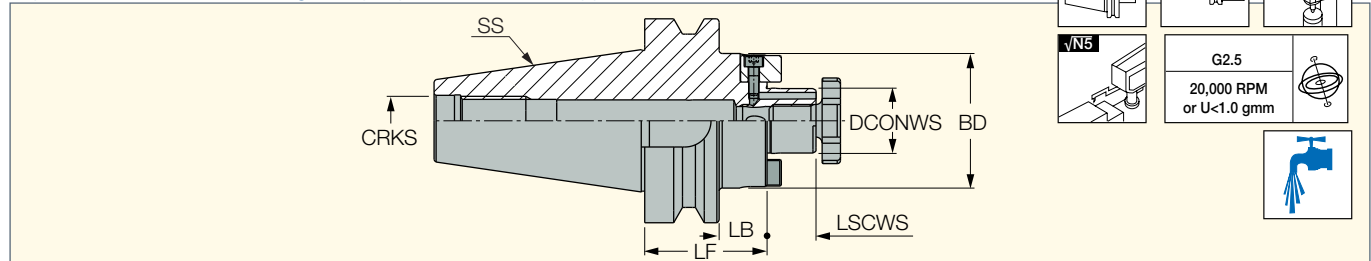
METRIC

### BT MAS

#### BT-FC-SEM-C

Shell Endmill Holders with Coolant Holes and BT MAS-403 Face Contact AD Tapered Shanks

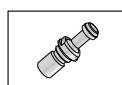
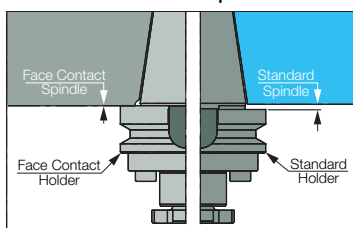
<https://www.iscar.com/eCatalog/Family.aspx?fnum=3130&mapp=IT&GFSTYP=M&srch=1>



Designation	SS	DCONWS	BD	LF	LB	LSCWS	CRKS	DCP <sup>(1)</sup>	kg
BT30 FC SEM16X50C	30	16.00	38.00	50.00	28.0	17.00	M12	0	0.62
BT30 FC SEM22X50C	30	22.00	47.00	50.00	28.0	19.00	M12	0	0.77
BT30 FC SEM27X50C	30	27.00	58.00	50.00	28.0	21.00	M12	0	0.88
BT40 FC SEM16X60C	40	16.00	38.00	60.00	34.0	17.00	M16	0	1.24
BT40 FC SEM22X60C	40	22.00	47.00	60.00	34.0	19.00	M16	0	1.42
BT40 FC SEM22X120C	40	22.00	47.00	120.00	94.0	19.00	M16	0	2.35
BT40 FC SEM27X45C	40	27.00	58.00	45.00	19.0	21.00	M16	0	1.45
BT40 FC SEM32X60C	40	32.00	66.00	60.00	34.0	24.00	M16	0	1.88
BT40 FC SEM32X78X60C	40	32.00	78.00	60.00	34.0	24.00	M16	0	2.25
BT50 FC SEM16X75C	50	16.00	38.00	75.00	38.5	17.00	M24	0	4.08
BT50 FC SEM16X120C	50	16.00	38.00	120.00	83.5	17.00	M24	0	4.42
BT50 FC SEM22X75C	50	22.00	47.00	75.00	38.5	19.00	M24	0	4.30
BT50 FC SEM22X120C	50	22.00	47.00	120.00	83.5	19.00	M24	0	4.87
BT50 FC SEM27X60C	50	27.00	58.00	60.00	23.5	21.00	M24	0	4.27
BT50 FC SEM27X105C	50	27.00	58.00	105.00	68.5	21.00	M24	0	5.21
BT50 FC SEM32X60 C	50	32.00	66.00	60.00	23.5	24.00	M24	0	4.51
BT50 FC SEM32X78X60C	50	32.00	78.00	60.00	23.5	24.00	M24	0	4.61
BT50 FC SEM40X60 C	50	40.00	82.00	60.00	11.5	27.00	M24	0	4.98

<sup>(1)</sup> 1 - Slot for data chip, 0 - Without slot for data chip

#### BT-FC Face Contact Taper



# NPA New Product Announcement

TOOLHOLDING

37-2024

JUNE 2024

METRIC

## Spare Parts

Designation	Shell Lock Screw	Drive Dog	Screw	Wrench
BT30 FC SEM16X50C	M8 CLAMP SCREW SEM16	DR.DOG 8S	SR M3X10DIN912	WRENCH M8 SEMC16*
BT30 FC SEM22X50C	M10 CLAMP SCREW SEM22	DR.DOG 10S	SR M4X10DIN912	WRENCH M10 SEMC 22*
BT30 FC SEM27X50C	M12 CLAMP SCREW SEM27	DR.DOG 12S	SR M5X14DIN912	WRENCH M12 SEMC 27*
BT40 FC SEM16X60C	M8 CLAMP SCREW SEM16	DR.DOG 8S	SR M3X10DIN912	WRENCH M8 SEMC16*
BT40 FC SEM22X60C	M10 CLAMP SCREW SEM22	DR.DOG 10S	SR M4X10DIN912	WRENCH M10 SEMC 22*
BT40 FC SEM22X120C	M10 CLAMP SCREW SEM22	DR.DOG 10S	SR M4X10DIN912	WRENCH M10 SEMC 22*
BT40 FC SEM27X45C	M12 CLAMP SCREW SEM27	DR.DOG 12S	SR M5X14DIN912	WRENCH M12 SEMC 27*
BT40 FC SEM32X60C	M16 CLAMP SCREW SEM32	DR.DOG 14X13S	SR M5X14DIN912	WRENCH M16 SEMC 32*
BT40 FC SEM32X78X60C	M16 CLAMP SCREW SEM32	DR.DOG 14X13S	SR M5X14DIN912	WRENCH M16 SEMC 32*
BT50 FC SEM16X75C	M8 CLAMP SCREW SEM16	DR.DOG 8S	SR M3X10DIN912	WRENCH M8 SEMC16*
BT50 FC SEM16X120C	M8 CLAMP SCREW SEM16	DR.DOG 8S	SR M3X10DIN912	WRENCH M8 SEMC16*
BT50 FC SEM22X75C	M10 CLAMP SCREW SEM22	DR.DOG 10S	SR M4X10DIN912	WRENCH M10 SEMC 22*
BT50 FC SEM22X120C	M10 CLAMP SCREW SEM22	DR.DOG 10S	SR M4X10DIN912	WRENCH M10 SEMC 22*
BT50 FC SEM27X60C	M12 CLAMP SCREW SEM27	DR.DOG 12S	SR M5X14DIN912	WRENCH M12 SEMC 27*
BT50 FC SEM27X105C	M12 CLAMP SCREW SEM27	DR.DOG 12S	SR M5X14DIN912	WRENCH M12 SEMC 27*
BT50 FC SEM32X60 C	M16 CLAMP SCREW SEM32	DR.DOG 14X13S	SR M5X14DIN912	WRENCH M16 SEMC 32*
BT50 FC SEM32X78X60C	M16 CLAMP SCREW SEM32	DR.DOG 14X13S	SR M5X14DIN912	WRENCH M16 SEMC 32*
BT50 FC SEM40X60 C	M20 CLAMP SCREW SEM40	DR.DOG 16X18S	SR M6X20 DIN912	WRENCH M20 SEMC 40*

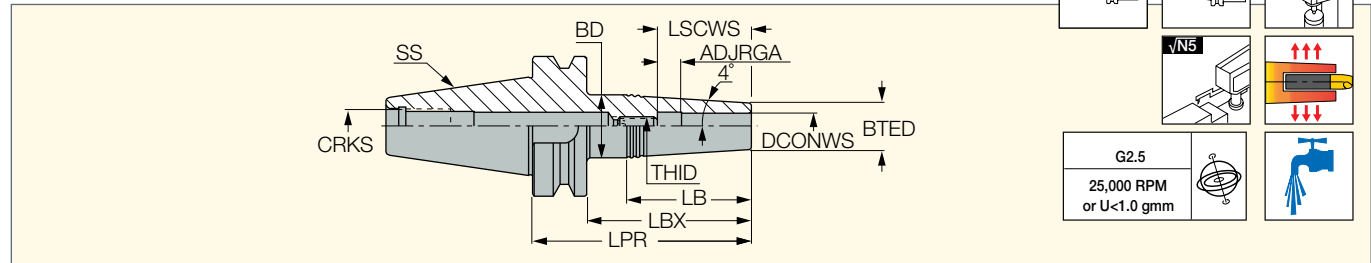
\* Optional, to be ordered separately

## SHRINKIN BT MAS

### BT-FC-SRK

Thermal Shrink Chucks with BT MAS-403 Face Contact AD Tapered Shanks

<https://www.iscar.com/eCatalog/Family.aspx?fnum=4106&mapp=IT&GFSTYP=M&srch=1>



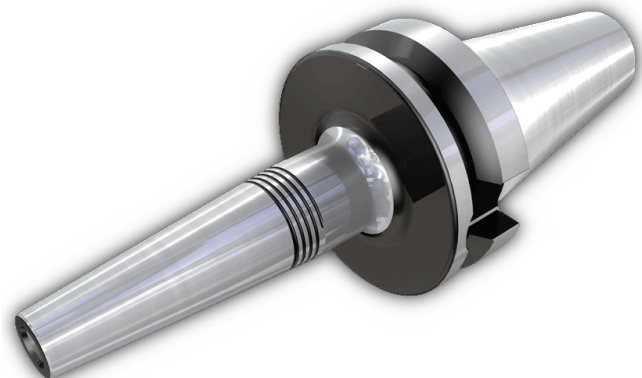
Designation	SS	DCONWS	BTED	BD	LPR	LBX	LB	ADJRGA	LSCWS	THID	CRKS	DCP <sup>(1)</sup>	kg
BT30 FC SRK 3X50	30	3.00	9.93	15.00	72.00	50.0	36.30	0.00	10.0	M6	M12	0	0.32
BT30 FC SRK 4X50	30	4.00	9.93	15.00	72.00	50.0	36.30	0.00	12.0	M6	M12	0	0.46
BT30 FC SRK 6X50	30	6.00	10.88	16.00	72.00	50.0	36.60	0.00	18.0	M8	M12	0	0.52
BT30 FC SRK 8X50	30	8.00	13.95	20.00	72.00	50.0	43.30	0.00	25.0	M10	M12	0	0.48
BT30 FC SRK12X50	30	12.00	20.03	26.00	72.00	50.0	42.70	10.00	42.0	M10	M12	0	0.53

• Use only inductive heating device for SRKIN holders • For through tool coolant, preset screw must be removed

<sup>(1)</sup> 1 - Slot for data chip, 0 - Without slot for data chip

## Spare Parts

Designation	Screw	Preset Screw
BT30 FC SRK 3X50	SR M6X10 DIN916	
BT30 FC SRK 4X50	SR M6X10 DIN916	
BT30 FC SRK 6X50	SR M8X12 DIN916	
BT30 FC SRK 8X50	SR M10X10 DIN913	
BT30 FC SRK12X50		PRESET M10X18B



# NPA

New Product Announcement

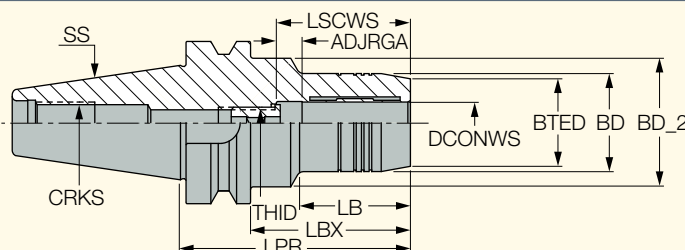
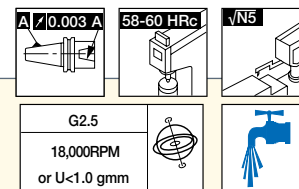
## BT MAS HYDROFIT

HOLDING LINE

### BT-FC-HYDRO

Hydraulic Chucks with MAS-BT Face Contact Form AD Shanks, for Semi-Finish and Finish Applications

<https://www.iscar.com/eCatalog/Family.aspx?fnum=4161&mapp=IT&GFSTYP=M&srch=1>



Designation	SS	DCONWS	LPR	BTED	BD	BD_2	LBX	LB	ADJRGA	LSCWS	THID	CRKS	DCP <sup>(1)</sup>	kg
BT30 FC HYDRO 6X60	30	6.00	60.00	23.00	26.00	-	38.0	33.00	10.00	37.0	M5	M12	0	0.50
BT30 FC HYDRO 8X64	30	8.00	64.00	25.00	28.00	45.00	42.0	29.00	6.00	37.0	M6	M12	0	0.60
BT30 FC HYDRO 10X64	30	10.00	64.00	27.00	30.00	-	42.0	37.00	10.00	42.0	M8x1	M12	0	0.50
BT30 FC HYDRO 12X72	30	12.00	72.00	29.00	32.00	-	50.0	43.00	10.00	50.0	M10x1	M12	0	0.60
BT30 FC HYDRO 14X70	30	14.00	70.00	30.00	34.00	-	48.0	33.00	10.00	48.0	M8x1	M12	0	0.70
BT30 FC HYDRO 16X90	30	16.00	90.00	34.00	38.00	-	68.0	52.00	10.00	52.0	M10x1	M12	0	0.90
BT30 FC HYDRO 18X90	30	18.00	90.00	36.00	40.00	-	68.0	52.00	10.00	52.0	M10x1	M12	0	0.90
BT30 FC HYDRO 20X90	30	20.00	90.00	38.00	42.00	42.00	68.0	-	10.00	52.0	M10x1	M12	0	0.90

- Chucking forces will be reduced by 25% if reduction sleeves are used
  - Reduction sleeves are available for 12, and 20 mm bore diameters (order separately)
  - Clamping wrench (wrench HYDRO HEX 4) and test bar to be ordered separately
- (1) 1 - Slot for data chip, 0 - Without slot for data chip

### Spare Parts



Designation	Screw
BT-FC-HYDRO	HYDRO CLAMP SCREW M8X14



# NPA

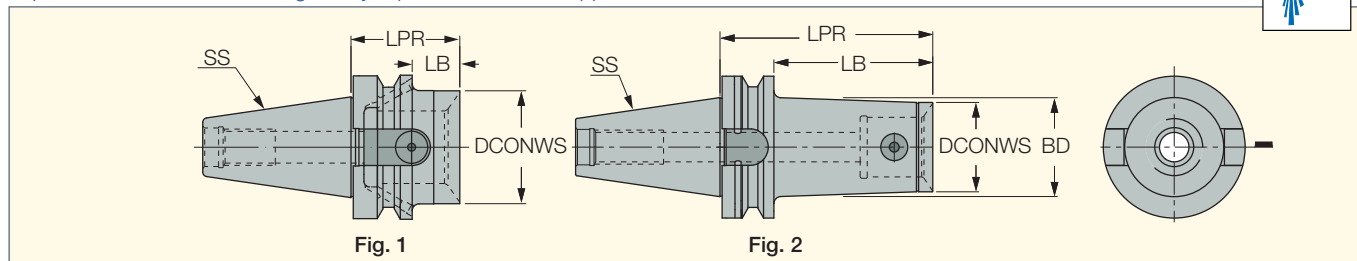
## New Product Announcement

### ITSBORE

#### BT-FC-MB

MB Modular Boring System with BT MAS-403 Face Contact AD Tapered Shanks

<https://www.iscar.com/eCatalog/Family.aspx?fnum=3233&mapp=BO&GFSTYP=M&srch=1>



Designation	SS	DCONWS	LPR	BD	LB	Fig.	kg	
BT40 FC MB50	40	50.00	48.00	-	21.0	1.	0.90	HW 6.0
BT40 FC MB50X120	40	50.00	120.00	-	93.0	2.	1.90	HW 5.0
BT40 FC MB63	40	63.00	66.00	-	-	1.	1.20	HW 8.0
BT50 FC MB50	50	50.00	66.00	-	28.0	1.	3.30	HW 6.0
BT50 FC MB50X120	50	50.00	120.00	60.00	82.0	2.	4.20	HW 6.0
BT50 FC MB63	50	63.00	75.00	-	37.0	1.	3.70	HW 8.0
BT50 FC MB63X150	50	63.00	150.00	70.00	112.0	2.	5.80	HW 8.0
BT50 FC MB80	50	80.00	75.00	-	37.0	1.	4.00	HW 8.0
BT50 FC MB80X180	50	80.00	180.00	-	142.0	2.	7.50	HW 8.0